

CERTIFICATE OF LOCATION OF GOVERNMENT CORNER

NORTH 1/4 Corner of Section 18, Township 105, Range 42, 5TH P.M.

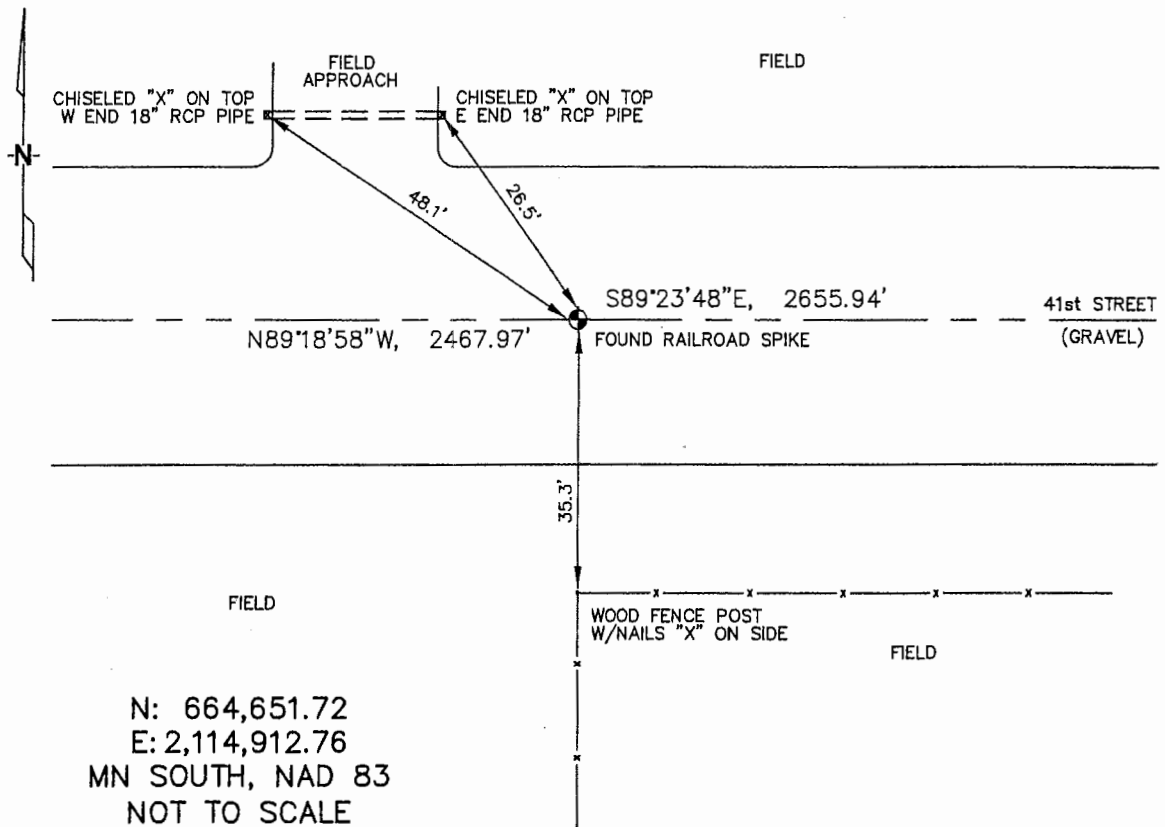
STATE OF MINNESOTA, County of MURRAY

At the corner location shown on the sketch :

On 3/15/2006 found RAILROAD SPIKE IN GRAVEL ROAD, OPPOSITE
A FENCE CORNER WITH FENCE RUNNING SOUTH.
 left monument as found, lowered monument, removed monument (explain)

On _____ set _____

Sketch of reference ties



Statement of evidence relative to this corner location is on back page

I hereby certify that this document and the data contained herein was prepared by me or under my direct supervision.

Thomas V. Zeff
Thomas V. Zeff
Date 6/29/06

Registration No. 44563

- Land Surveyor, Professional Engineer
- County Surveyor, County Engineer

OFFICE OF THE COUNTY RECORDER

County of _____

SEP 28 2006

I hereby certify that this document was filed in the Co. Recorders office at _____ .M. on the day of _____ A.D. , 20

County Recorder James V. Johnson
By _____, Deputy

DOCUMENT NO. _____

STATEMENT OF EVIDENCE:

NORTH 1/4 CORNER, SECTION 18, T. 105 N., R. 42 W.,
MURRAY COUNTY, MINNESOTA

- 1861 D.W. Wellman & S.S. Smoot, US. Deputy Surveyors, monumented corner.
- 4/25/1901 Murray Co., found 18"X22"X32" stone; no ties.
- 3/15/2006 Ulteig Engineers, Inc., Survey Crew, Brain Payne Party Chief, found a railroad spike in gravel road.
Ties: S-35.3' to nailed "X" in corner fence post;
NW-26.5' to chiseled "X", top, E end, 18" R.C.P.;
NW-48.1' to chiseled "X", top, W end, 18" R.C.P.;
E-2655.94' to NE corner, Section 18;
W-2467.97' to NW corner, Section 18.